



**Create a high-performance campus which positions Hancock County as a high-tech powerhouse.**



**Minimize environmental impact by designing to fit into nature and work with climate.**

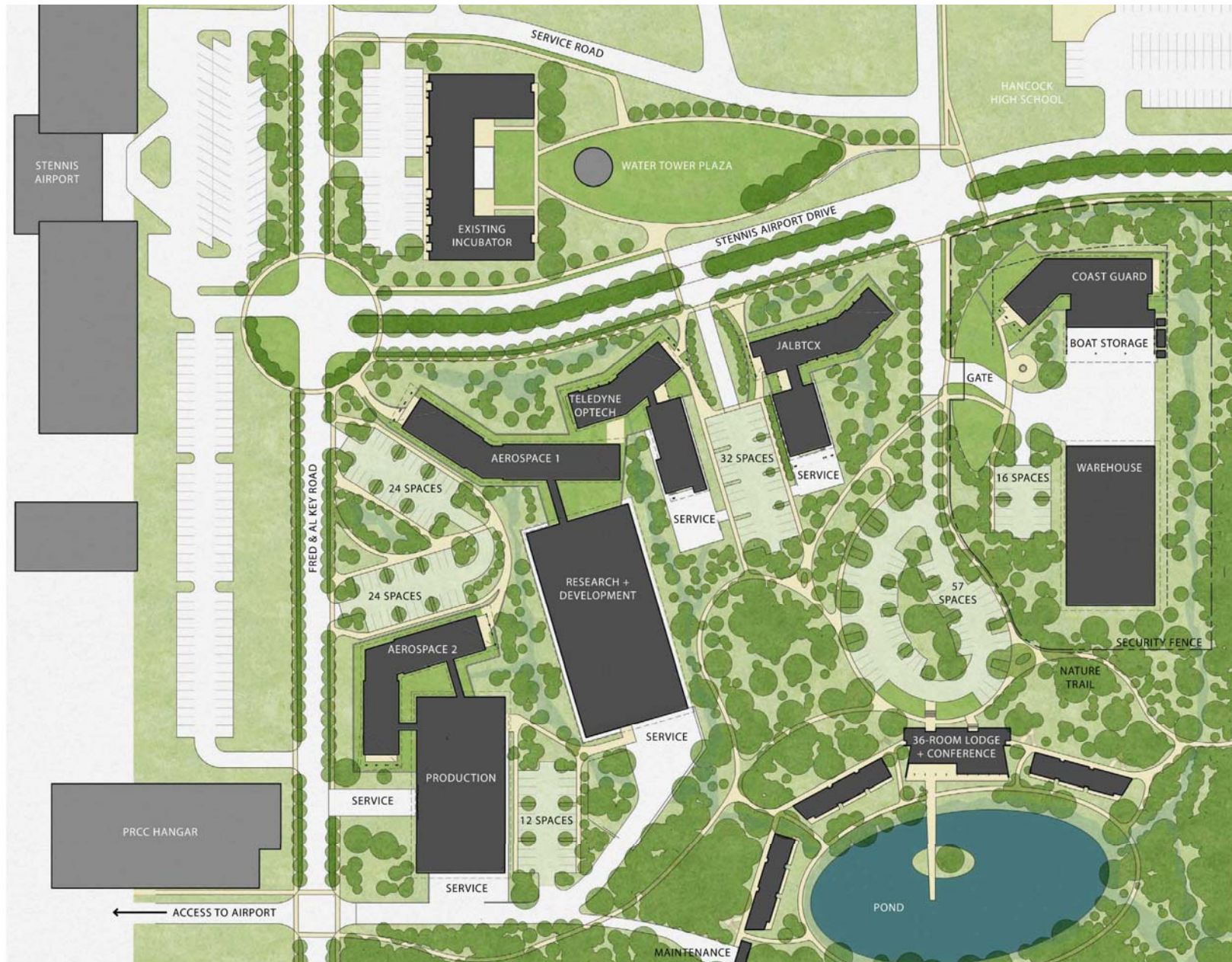


**Design buildings to use resources efficiently to become zero-carbon, zero-energy structures.**



**Intensify development to conserve open space and reduce infrastructure through shared resources.**























## WOOD

1. Lower carbon footprint
2. Lower initial cost
3. Faster construction
4. Inherent fire-resistance
5. Local, renewable resource

## METAL

1. Longer span
2. Recycled material
3. Lower maintenance at exterior
4. Higher load capacity





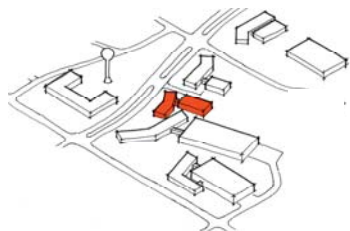
**TELEDYNE OPTECH**  
TECH CENTER





**TELEDYNE OPTECH**  
TECH CENTER





- 1 ENTRY PORCH
- 2 RECEPTION
- 3 CONFERENCE RM
- 4 EXECUTIVE OFFICE
- 5 OFFICE
- 6 OPEN OFFICE
- 7 GALLERY
- 8 BREAK ROOM
- 9 TOILET ROOM
- 10 SERVER ROOM
- 11 FILE ROOM
- 12 PORCH
- 13 COURTYARD
- 14 PLOTTER ROOM
- 15 MECHANICAL
- 16 LABORATORY
- 17 CLEAN ROOM
- 18 RESTRICTED LABORATORY
- 19 STORAGE
- 20 SHIPPING / RECEIVING
- 21 MACHINE SHOP
- 22 SECURE TRAILER PARKING
- 23 LOADING DOCK
- 24 SERVICE YARD

EXISTING: 8,000 SF

PROPOSED: 9,400 SF



**TELEDYNE OPTECH**  
TECH CENTER

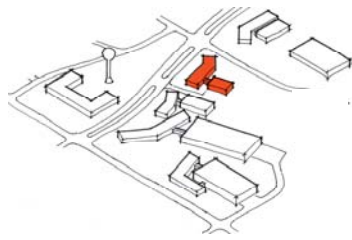












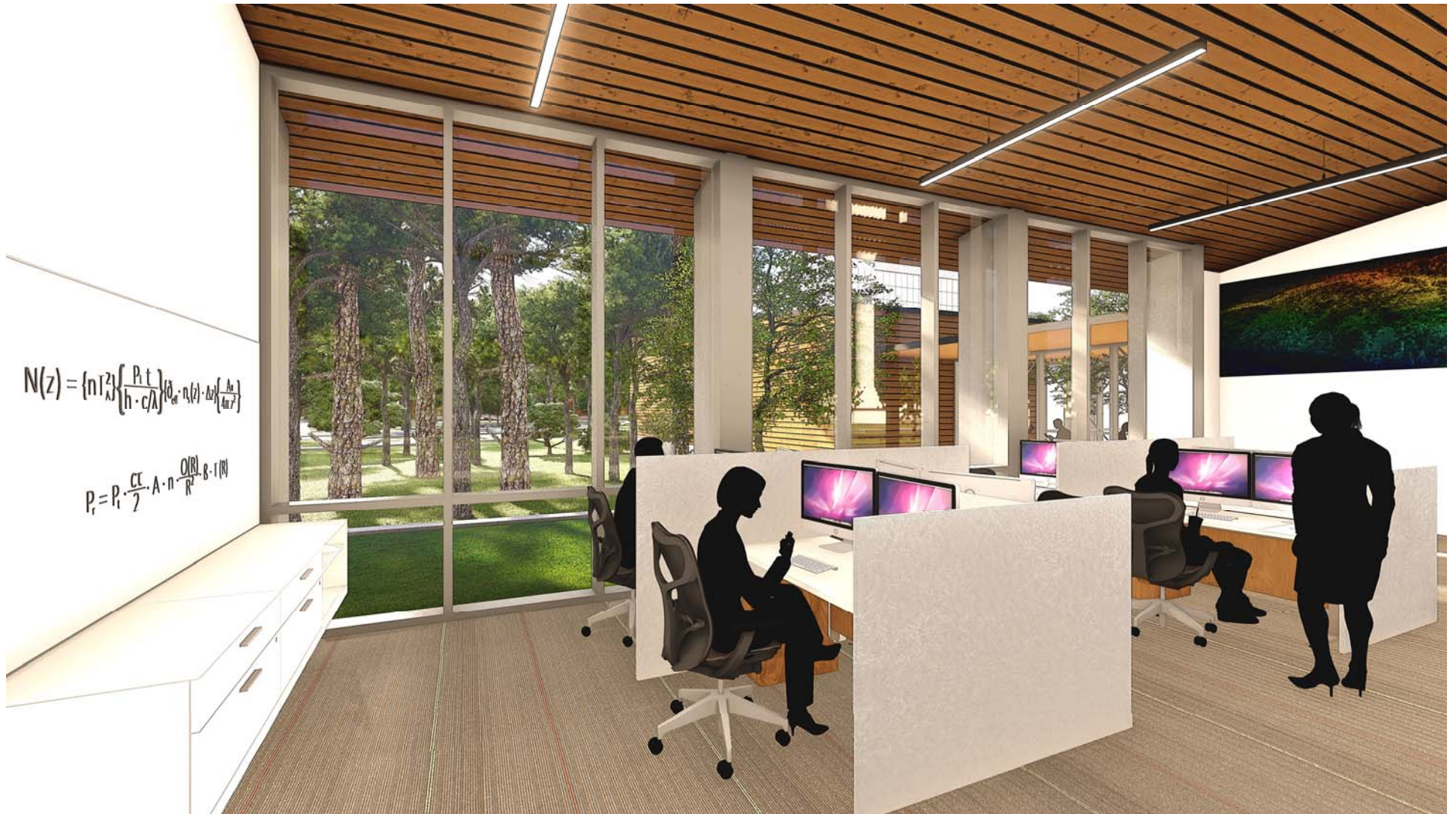
- 1 ENTRY PORCH
- 2 RECEPTION
- 3 CONFERENCE RM
- 4 NAVO OFFICER
- 5 USACE OFFICER
- 6 OPEN OFFICE NAVO
- 7 OPEN OFFICE USACE
- 8 BREAK ROOM
- 9 TOILET ROOM
- 10 SERVER ROOM
- 11 FILE ROOM
- 12 PORCH
- 13 NAVY MET OFFICER
- 14 NOAA OFFICER
- 15 NAVY MET OPEN OFFICE
- 16 NOAA OPEN OFFICE
- 17 MECHANICAL
- 18 FISHBOWL
- 19 SHIPPING / RECEIVING
- 20 EQUIPMENT WORKSHOP
- 21 EQUIPMENT STORAGE
- 22 LOADING DOCK
- 23 SERVICE YARD

EXISTING: 9,500 SF  
PROPOSED: 10,200 SF



**JALBTCX**  
TECH CENTER





$$N(z) = \{n(z)\} \left\{ \frac{P_i(z)}{h \cdot c/\lambda} \right\} \left\{ \frac{P_i(z)}{h \cdot c/\lambda} \right\} \left\{ \frac{P_i(z)}{h \cdot c/\lambda} \right\}$$

$$P_i = P_i \cdot \frac{c}{\lambda} \cdot A \cdot n \cdot \frac{O(R)}{R^2} \cdot B \cdot I(R)$$

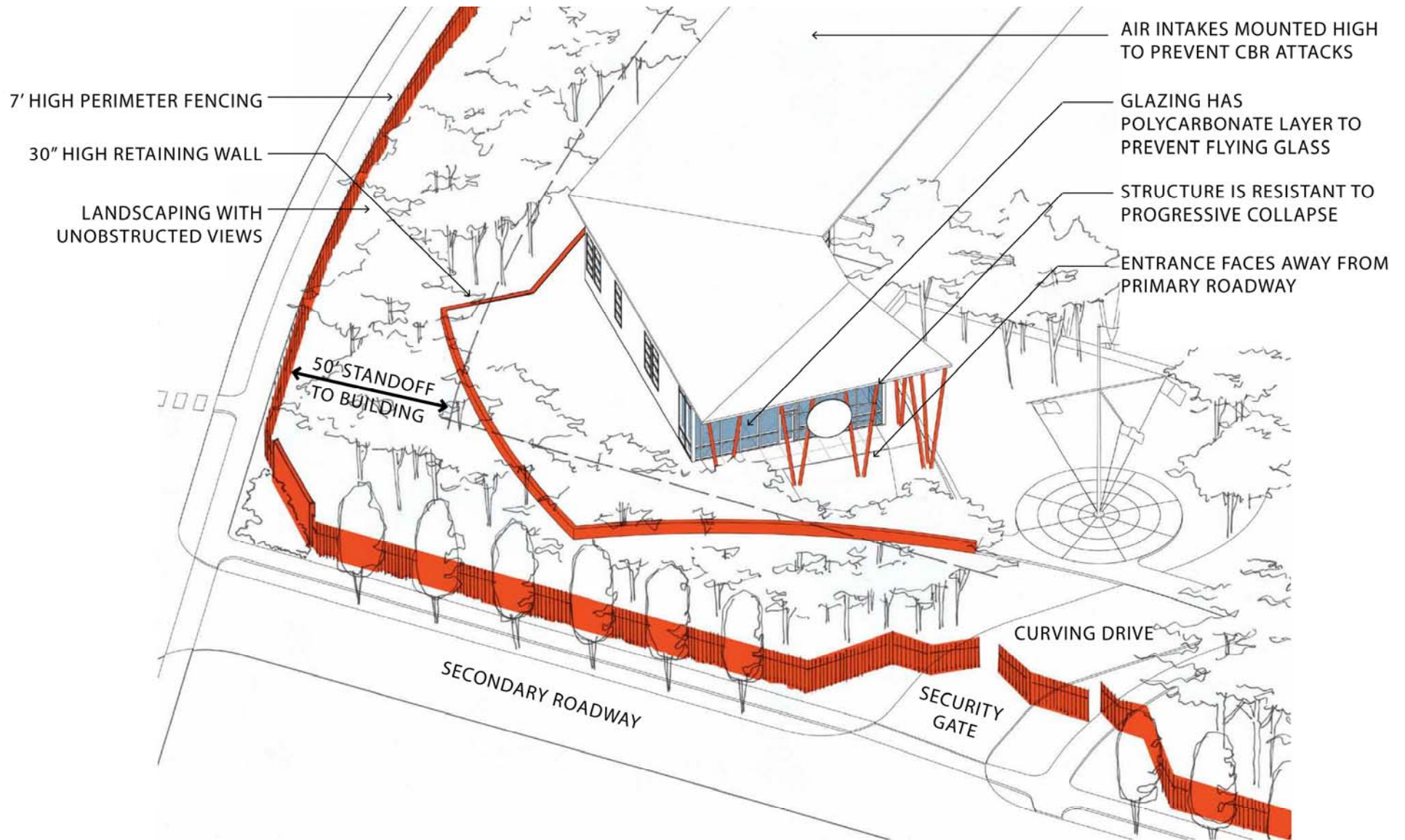




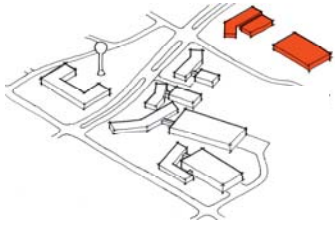












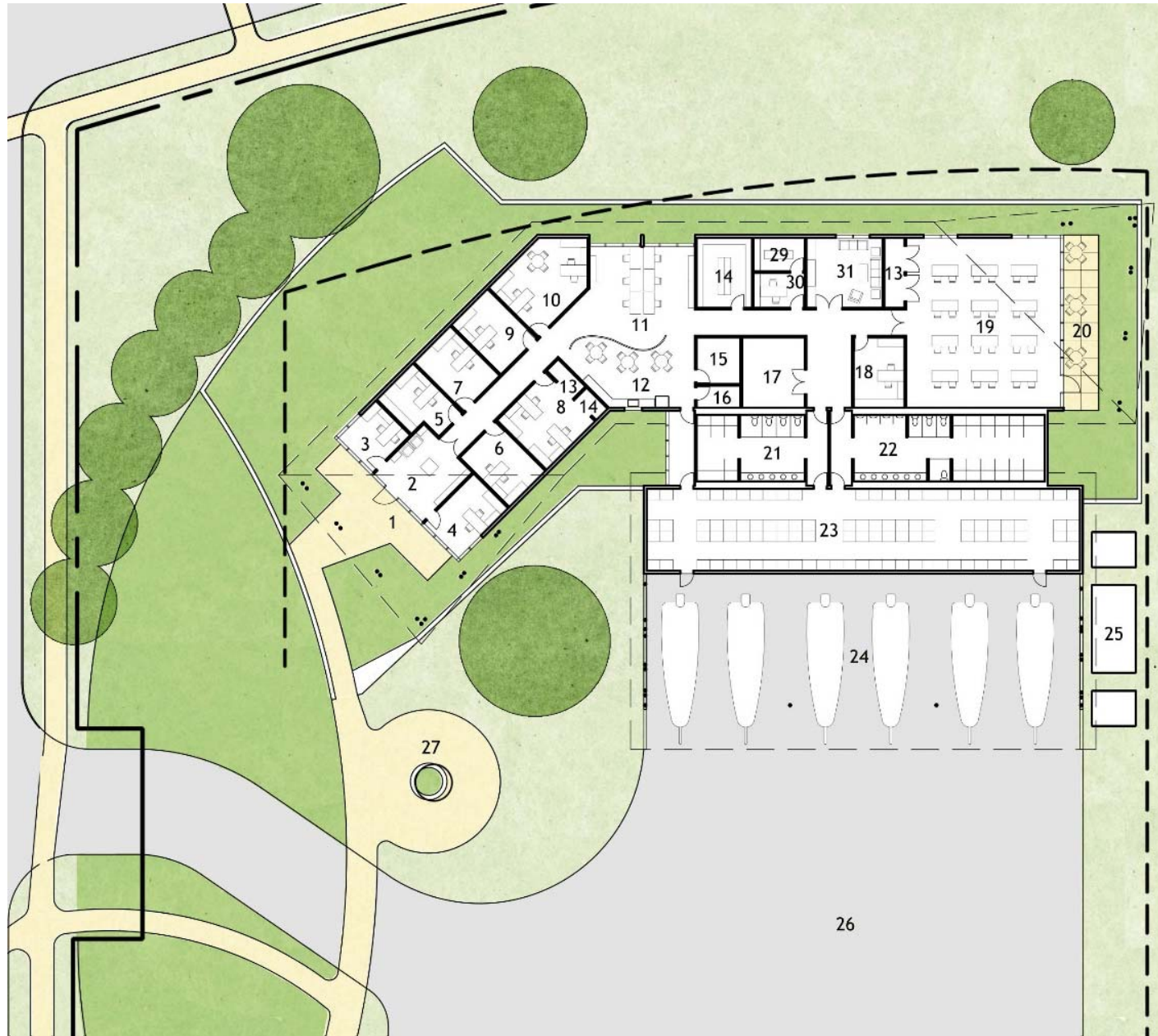
EXISTING: 27,000 SF  
PROPOSED: 30,000 SF



**US COAST GUARD**  
TECH CENTER



- 1 ENTRY PORCH
- 2 QUARTERMASTER
- 3 COMMANDING OFFICER
- 4 SECURITY DIVISION
- 5 EXECUTIVE OFFICER
- 6 BOAT DIVISION OFFICE
- 7 OPERATIONS OFFICER
- 8 COMMUNICATIONS DIVISION
- 9 LOGISTICS OFFICER
- 10 LOGISTICS DIVISION OFFICE
- 11 OPEN OFFICE
- 12 COFFEE / MESS
- 13 STORAGE
- 14 FILE ROOM
- 15 SERVER ROOM
- 16 JANITOR
- 17 MECHANICAL
- 18 ADMIN / PERSONNEL
- 19 ADVANCED INSTRUCTION
- 20 PATIO
- 21 WOMEN TOILET / SHOWER
- 22 MEN TOILET / SHOWER
- 23 PERSONAL GEAR STORAGE
- 24 BOAT SHED
- 25 ARMORY
- 26 SERVICE YARD
- 27 MUSTER YARD
- 28 WAREHOUSE
- 29 HEALTH CARE EXAM ROOM
- 30 HEALTH CARE OFFICE
- 31 CHIEF'S MESS



**US COAST GUARD**  
TECH CENTER

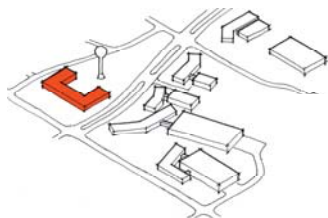












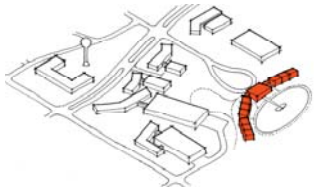
- 1 ENTRANCE / RECEPTION
- 2 OFFICE
- 3 OPEN OFFICE
- 4 RESEARCH LAB
- 5 SHIPPING/RECEIVING
- 6 TOILET ROOM
- 7 STORAGE/SUPPORT
- 8 BREAK ROOM
- 9 CONFERENCE ROOM

EXISTING SIZE: 16,950 SF



## EXISTING INCUBATOR TECH CENTER





- 1 ENTRY PORCH
- 2 FOYER
- 3 RECEPTION
- 4 LOBBY
- 5 BAR
- 6 MULTI-PURPOSE ROOM
- 7 MECHANICAL
- 8 SERVICE
- 9 CATERING KITCHEN
- 10 WOMEN
- 11 MEN
- 12 CLASSROOM
- 13 VERANDAH
- 14 SERVICE COURT
- 15 GUEST ROOM
- 16 GUEST SUITE
- 17 STAIR
- 18 LAUNDRY/SERVICE



**36 GUESTROOMS**  
**21,200 SF ENCLOSED**



**LODGE + CONFERENCE CENTER**  
**TECH CENTER**

**25**



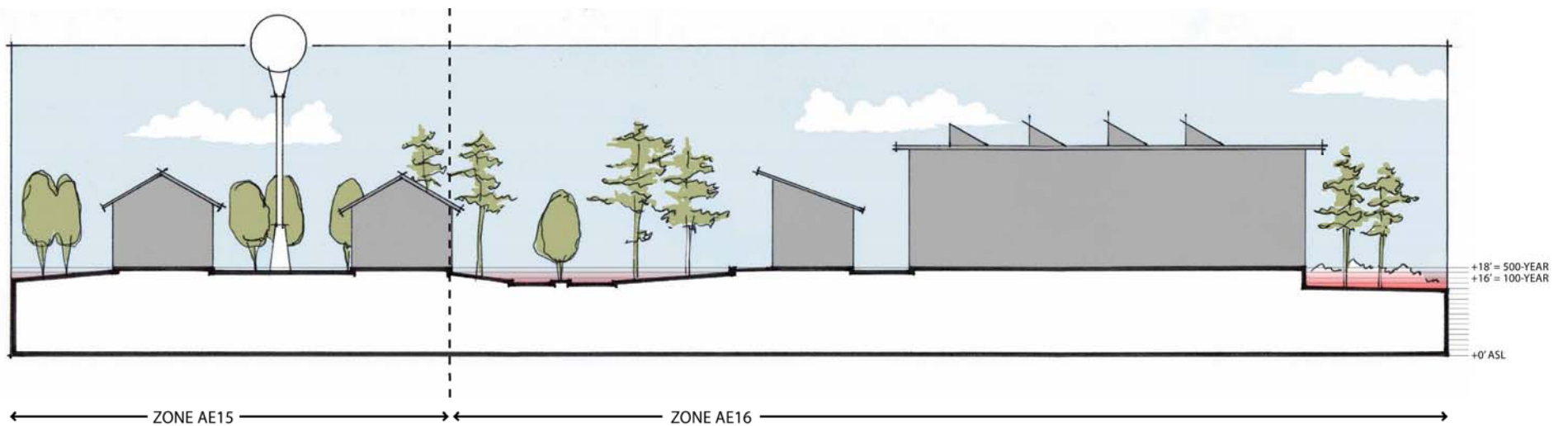


**LODGE + CONFERENCE CENTER**  
TECH CENTER

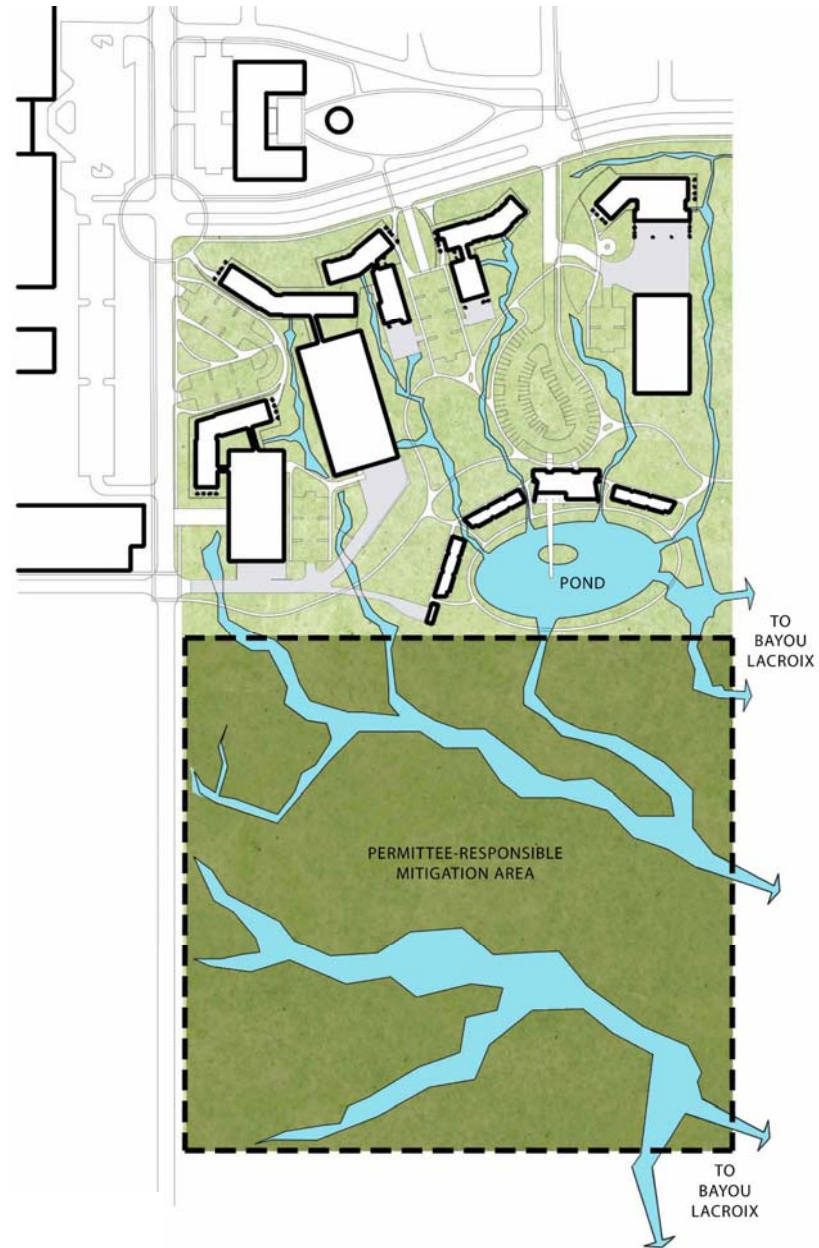




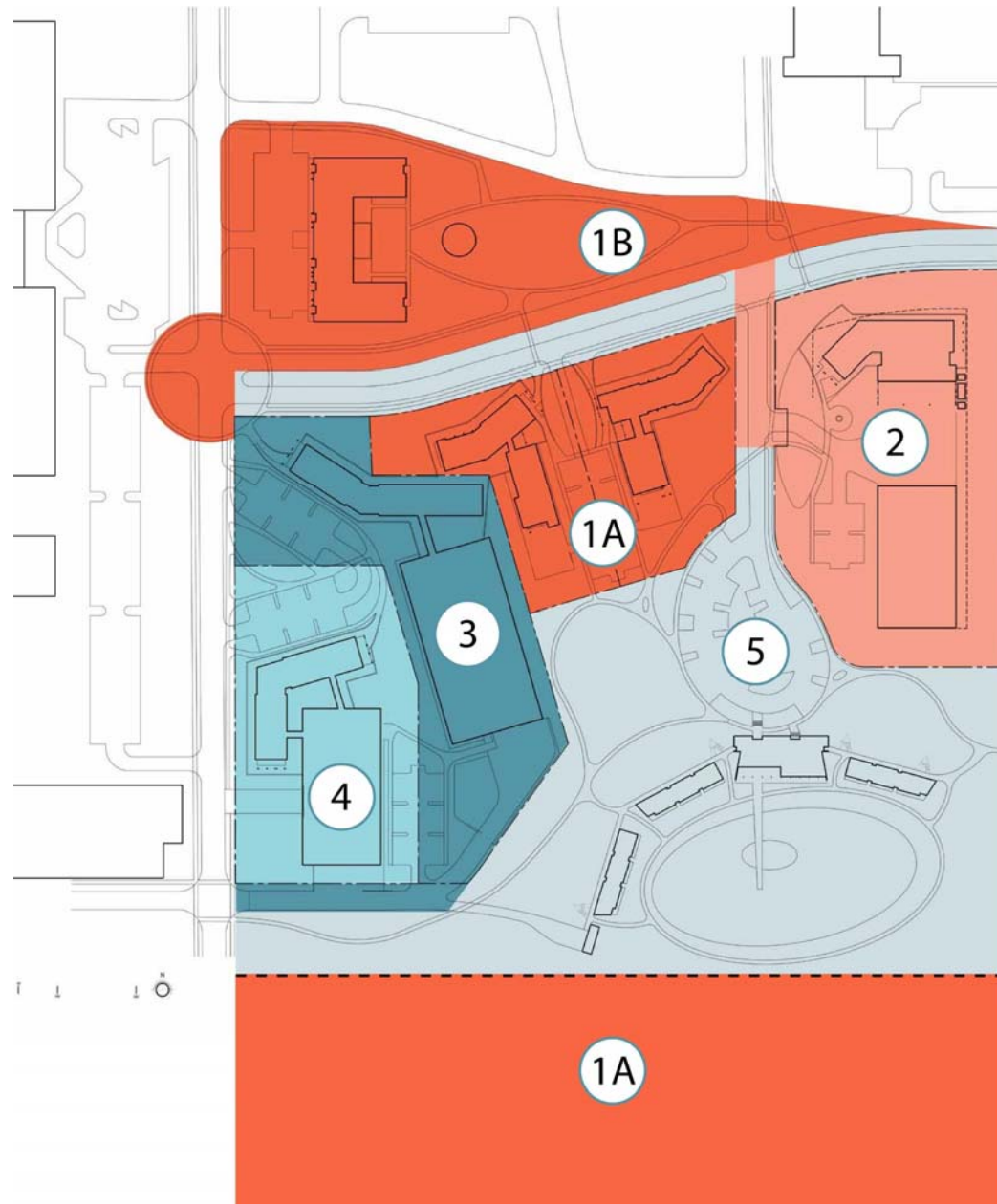














## PROGRAM + COST ESTIMATE SUMMARY

1A	TELEDYNE OPTECH	1.07 AC	9,475 SF	3,150,000
1A	JALBTCX	1.3 AC	10,200 SF	3,370,000
1B	EXISTING INCUBATOR	3.2 AC	16,950 SF	1,790,000
2	US COAST GUARD	3.2 AC	31,200 SF	9,265,000
3	AEROSPACE 1	2.67 AC	39,200 SF	12,705,000
4	AEROSPACE 2	2.1 AC	29,200 SF	9,290,000
5	CONFERENCE CENTER	N/A	21,200 SF	6,820,000
	GENERAL SITEWORK	20 AC	N/A	2,800,000
<b>TOTAL PROJECT CONSTRUCTION</b>				<b>49,190,000</b>











